

1. BEFORE USING U210

About This User's Manual

This user manual contains all the necessary information regarding the device installation and how to use the modem for your internet navigation. Please make sure that you are familiar with the device operation by carefully reading this user manual before using the U210 EVDO USB modem..

Instructions

- Install the Franklin Access Manager™ software by inserting the U210 USB Device into your PC. The installation software is included in the U210 modem memory. When you insert the U210 into your computer, the installation process will automatically begin.
- It is highly recommended that you read the safety precautions described in this manual before using the U210.

Documents Included on your Modem Memory

- Broadband Usage Conditions, Terms & Conditions
User Manual

Product Overview

Welcome and thank you for choosing U210 USB Modem for your wireless internet connection.

The U210 is a high-speed wireless device that enables your computer to connect to 3G high-speed wireless network. The U210 provides simple yet powerful user interface that is easy to install and use.

Product Package Contents

The following items are included in the product package. If any of the items listed below are missing, please contact the local retail store where you purchased the product.

- U210 Modem Device
- Quick Start Guide
- USB Extension Cable
- Carrying Pouch

Introduction to U210 USB Modem

The U210 is designed for the USB port on your computer, which is available in most PC

models. The U210 allows you to

- Access the Internet,
- Send and receive e-mail
- Access your corporate network through VPN

With U210, you are always connected whether you are away from home, on the road, or wherever wired Internet access is not readily available.

Product Specifications

- Power management: The U210 utilizes power management and system overhead reduction functions provided by the USB interface for maximum power savings.
- Antenna design: Its efficient and innovative design optimizes data transfer rate and sensitivity to network signals.
- Extension USB cable connector: This extension cable may be used to increase RF performance, and to resolve clearance issues if there is any.
- USB Modem that supports Type A USB Port interface.
- Supports PCS(1900 MHz) and Cellular (800 MHz) dual bands.
- Utilizes Qualcomm QSC6085 chipset
- Supports high-speed network technologies
- Support Windows XP, Vista, 7 and Apple Macintosh systems with installed Franklin Access Manager™ connection manager software and driver.

Product handling

- Do not place any adhesive labels on the USB connector. It may leave a sticky residue that can cause problems inside the PC USB port.
- The U210 USB device should easily slide into the USB port. Do not force the U210 into the USB port as it may cause damage to the modem and/or the port.
- Keep the U210 in a dry and clean place. (Storage temperature: -22°F to 149°F [-30°C to 65°C]). Keep your device away from liquids, dust and excessive heat.

Configuration

To use the U210 on your computer, you need to install the Franklin Access Manager™ software included in the modem memory and configure the U210 USB device. See the next section for more information on software installation and USB device configuration.

The following section will guide you through the installation and setup process for Franklin Access Manager™ software. Before getting started, you should become familiar with the documentation that came with your USB Modem.

2. INSTALLATION AND SETUP FOR FRANKLIN

ACCESS MANAGER™

This section will guide you through the installation and setup process for Franklin Access Manager™ software.

Before getting started, you should become familiar with the documentation that came with your USB Modem.

Installing Software

Warnings

- Make sure to complete the unplugging/ejection process before removing the U210.
- If you remove the device improperly, the modem may be damaged.

Notes

- If you have inserted the device properly, Windows will inform you of the new hardware. Wait until Windows completes the "Found New Hardware" task.
- In Windows 2000, several windows similar to "Found New Hardware" window can appear and disappear automatically. In Windows XP, several tool tips similar to the "Found New Hardware" function will appear and disappear in the system tray automatically. In Windows Vista, several tool tips similar to the "Installing device driver software" function will appear and disappear in the system tray automatically. Once hardware detection is complete, you will be prompted to start activation.
- It is normal to hear a short beep sound each time you insert or remove the U210.
- It is an audible notification that your PC recognizes the new hardware.

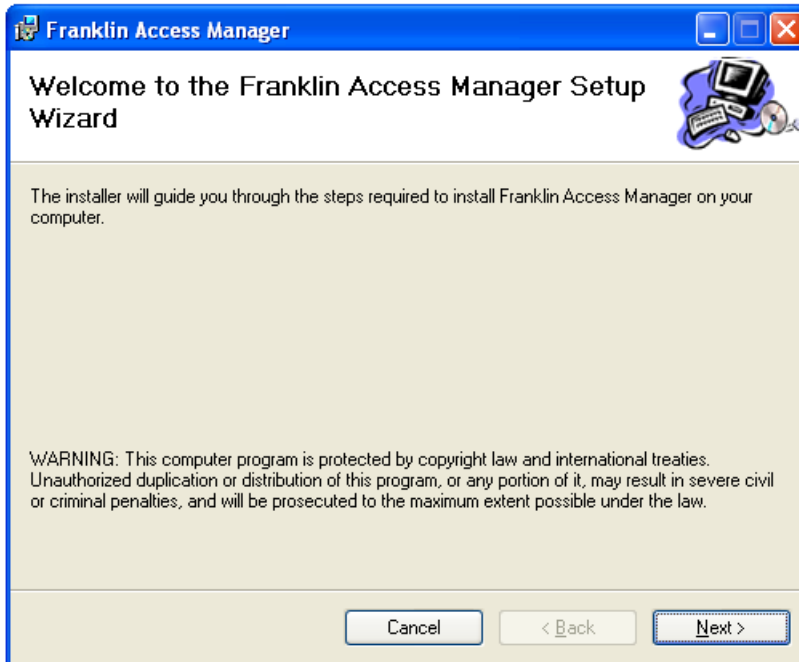
Getting Started (Windows)

To install the Franklin Access Manager™ software:

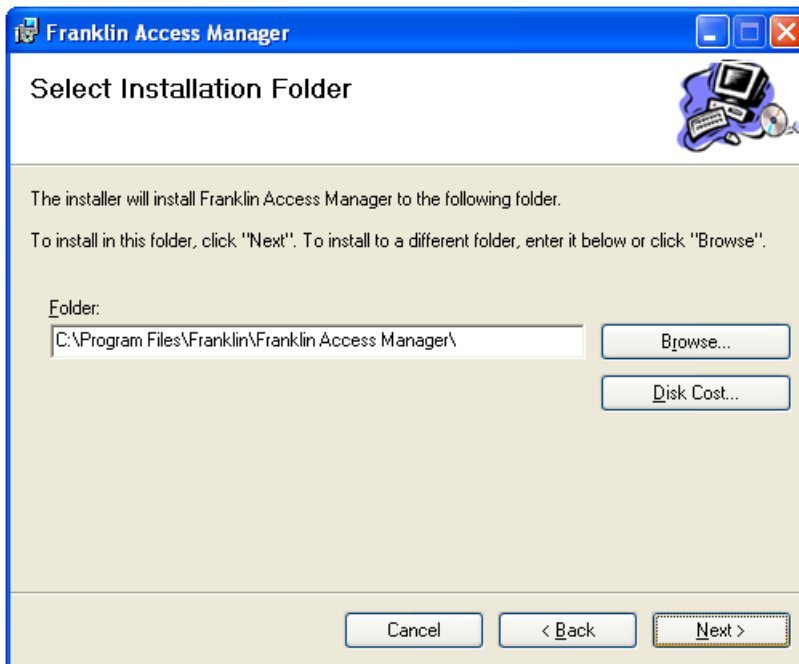
- Turn on your computer then close all applications.
- Insert the U210 modem into your USB port.
- Your computer will recognize U210 modem and start the installation sequence automatically. If the program does not launch automatically, go to my computer and select the 'FAMCD' drive and double click 'start.exe' program.
- Follow the steps in the next section.

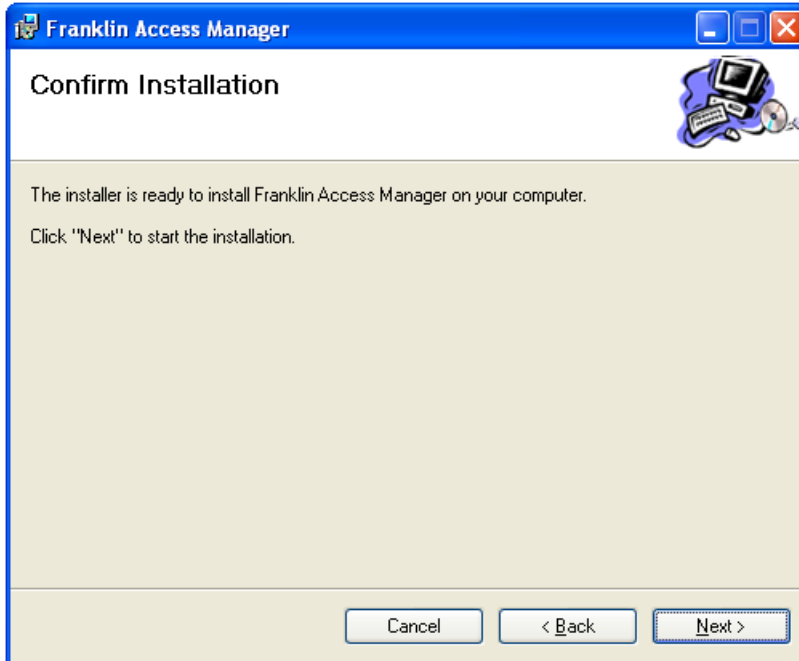
Setup Program – for Windows

STEP 1: The "Welcome to the Franklin Access Manager Setup Wizard" screen appears. Click the [Next] button to continue with the installation process.

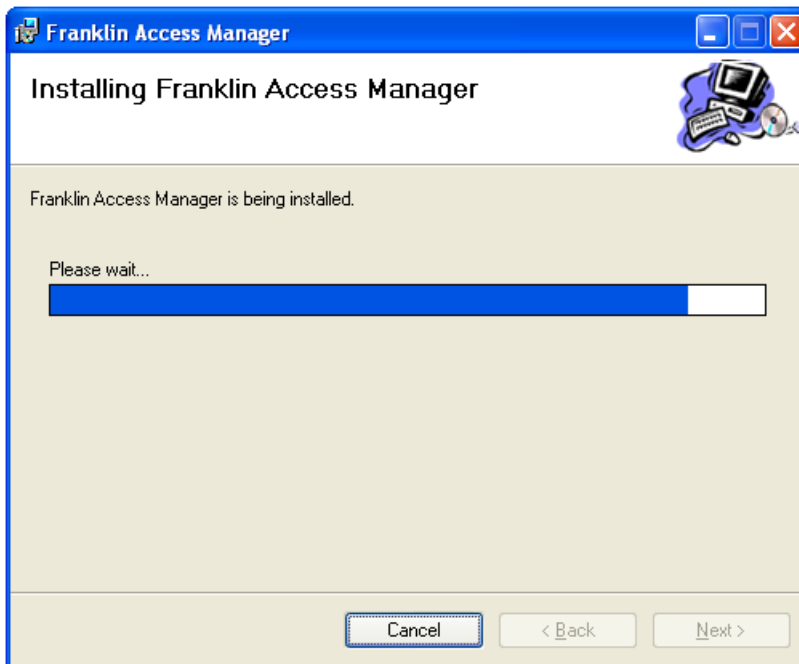


STEP 2: You are now ready to select the location on your computer where Franklin Access Manager™ will be installed. It is recommended that you do not modify the default destination folder. Click the [Next] button to continue.



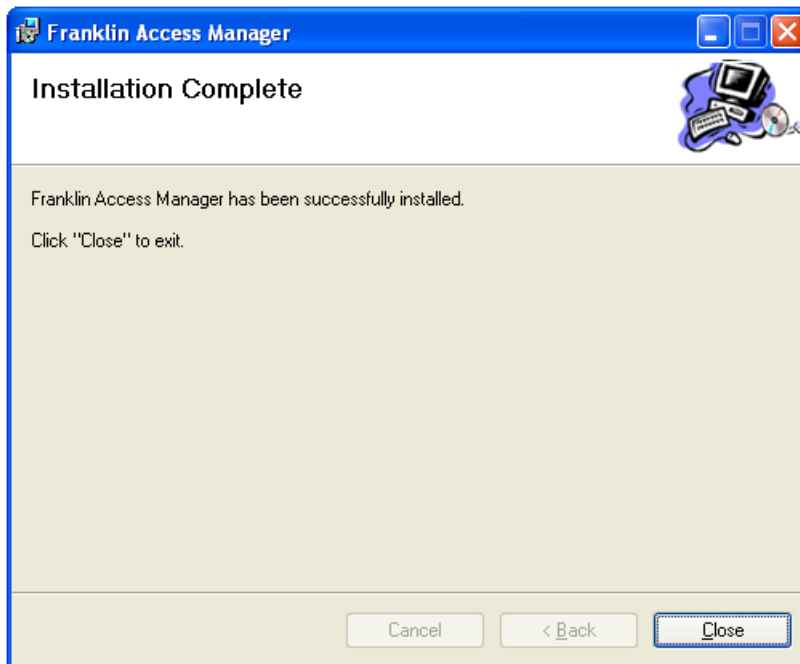


STEP 3: During this step the components of Franklin Access Manager product are being installed onto your computer. Installation will occur to the destination folder specified in Step 2.



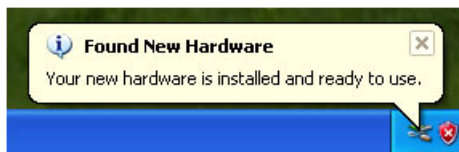
STEP 4: Installation of Franklin Access Manager is now complete. Click the [Close]

button to leave the Franklin Access Manager setup program and begin using your new software.



- The setup program will automatically create a Franklin Access Manager shortcut on your desktop.

STEP 5: Please wait while U210 is installed and ready to use.



3. STARTING FRANKLIN ACCESS MANAGER™

Franklin Access Manager™ is a connection manager application for U210 USB modem. It allows you to manage and monitor the Internet connection between your computer and the wireless network. It has user friendly interface and is equipped with many useful features that will enhance your internet navigation experience.

Features

WWAN(Wireless Wide Area Network, 1xEV-DO/1xRTT/CDMA)

Specific Features:

- Configures your computer to use your USB Modem
 - Creates a Data Connection for your USB Modem
 - Copies utility to create wireless copies of your dial-up connections, if supported by your device
 - Test function for WWAN device
- A WWAN capable device is required to use the WWAN features. Individual WWAN features are also device dependent as described in the WWAN section above.

Other Features:

- Logs connections used, duration of the usage, and bytes sent and received.
- See the section "Additional Features" for more information about the features of Franklin Access Manager™ software.

Getting Started

Double click on the Franklin Access Manager icon on your desktop or click on the Windows Start menu and select Franklin Access Manager from the list of programs.



About the Wireless Networks View

Franklin Access Manager will open the Broadband Networks window as shown below. This view is where you manage your Broadband connections. The Broadband Networks window displays all the available network connections.

At a glance you can see the signal strength. Your current connection state and the elapsed time of the connection are displayed along the bottom of the status bar.



Connecting to the Internet

Once your device is properly configured, connecting to the Internet is as simple as clicking the "Connect" button.

Once connected, the "Connect" button will change to "Disconnect".

Simply click this "Disconnect" button to end your current connection. To connect to any other network shown, select it, and then click the "Connect" button.

The Status Bar

Information regarding your current network connection can be seen in the status bar along the bottom of Franklin Access Manager interface. For more information on this status bar, see the section "The Status Bar" in the "Additional Features" section.

Franklin Access Manager will display status information at the bottom during the connection process as well as while connected.

When it is not connected, the status text in the lower left corner will display "Not connected" for the currently selected network. The timer will display "00:00:00". Once connected, the status text will display "Connected" and the timer will begin to run.

Right clicking on the tray icon provides various options and double clicking on it will always show the application. Placing your mouse pointer on it will display the current connection status.

Based on your preferences, your browser can be launched automatically upon connection.

Using the "Data" connection:

By default Franklin Access Manager enables the software for data connections.

If your connection fails when you try to connect, please try to reconnect.

Dormancy:

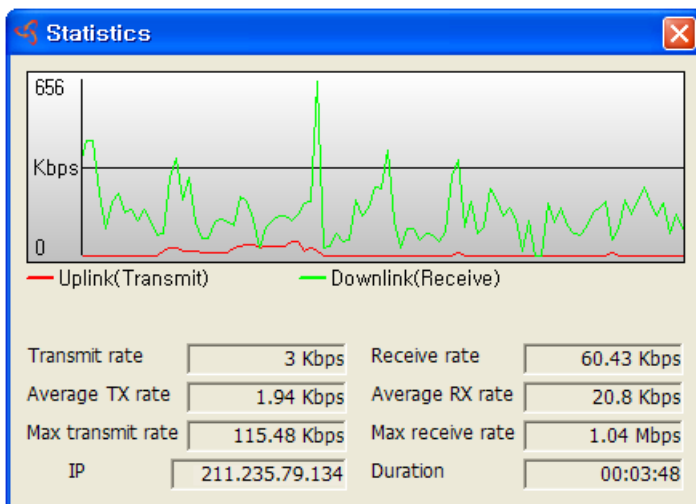
The data session can go to dormant mode if you are not sending or receiving any data for an extended period of time. As soon as you resume sending or receiving data, the data session will return to an active state automatically.

4. USING FRANKLIN ACCESS MANAGER™

The Session Menu



- **Connect / Disconnect**: Use this button to connect or disconnect the wireless networks.
- **Statistics**: At any time during your connection you can check your current connection speed and throughput stats in the Statistics window. To see this window, select "Statistics" from the "Session" menu.



- **Exit**: Close the Franklin Access Manager™ Software

The Tools Menu

- **Log**: This feature provides a concise session log of your network activity. Click on a column heading to sort the log. This window also displays the total number of sessions as well as the total connected time. The information displayed in the Usage log can be customized using the controls that appear just below the list.

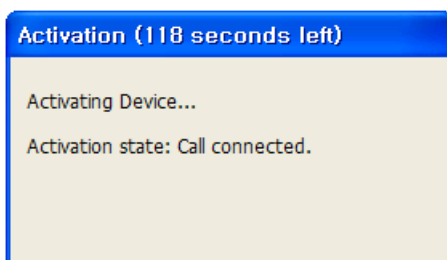
Connection	Date/Time	Duration	IP Address	Bytes Received	Bytes Sent	Total Bytes
Mobile Broadband	06-16-2009 13:43:04	37	211.235.75.82	54202	14423	68625

View Selected connection Cox Broadband ▼

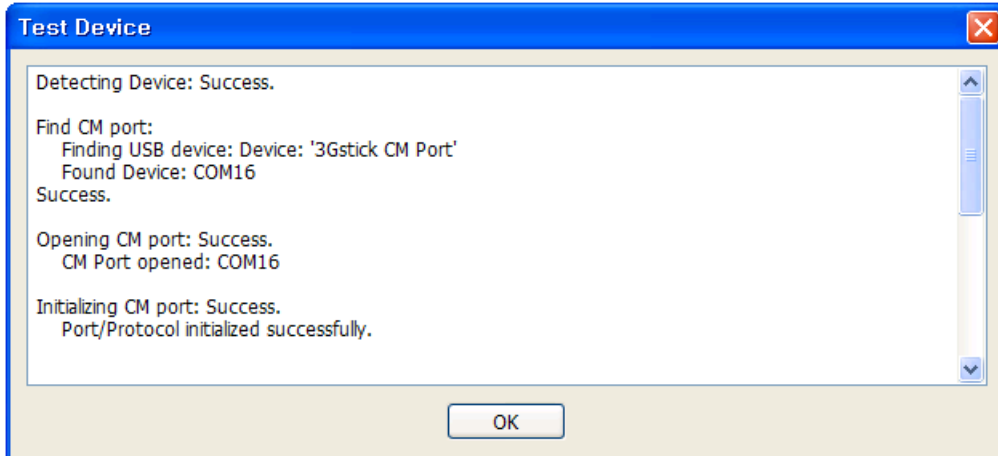
Date range From : 2009-06-16 ▼ To : 2009-06-16 ▼

Clear Close

- To view only the connection history of a specific network type, check the "Selected connection" checkbox and select the desired type from the drop-down list.
- To view only the connections made during a specific interval, check the "Date range" checkbox and specify the date in the "From:" and "To:" fields.
- To clear the log, press the Clear button. Note that clearing the log cannot be undone.
- **Activation:** Programs the activation code, phone number, and IMSI(MIN) to the USB Modem.



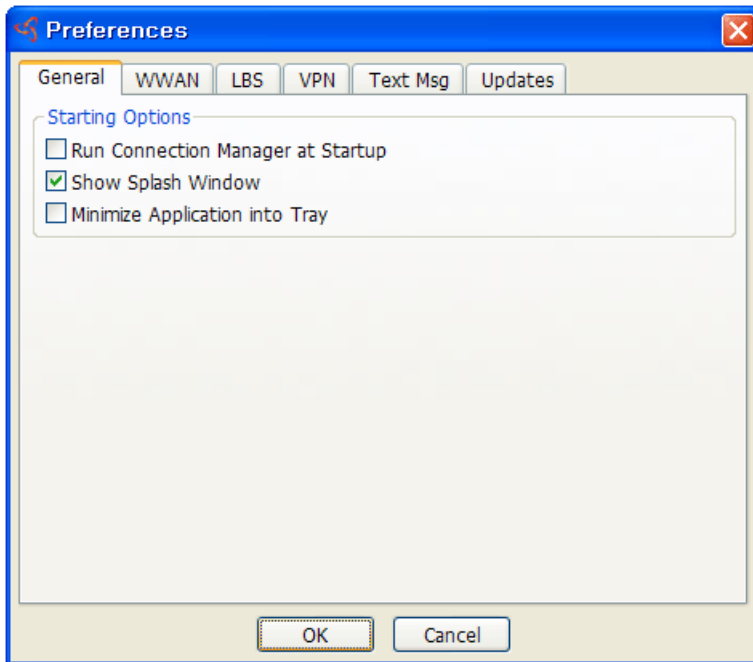
- **Test Device:** Retrieve and display detailed information about your WWAN device (1xEV-DO/1xRTT/CDMA USB Modem) such as CM port, model, MEID, MDN, etc. This information can be valuable when troubleshooting a problem.



The Options Menu

[Preferences]

(1) General Tab

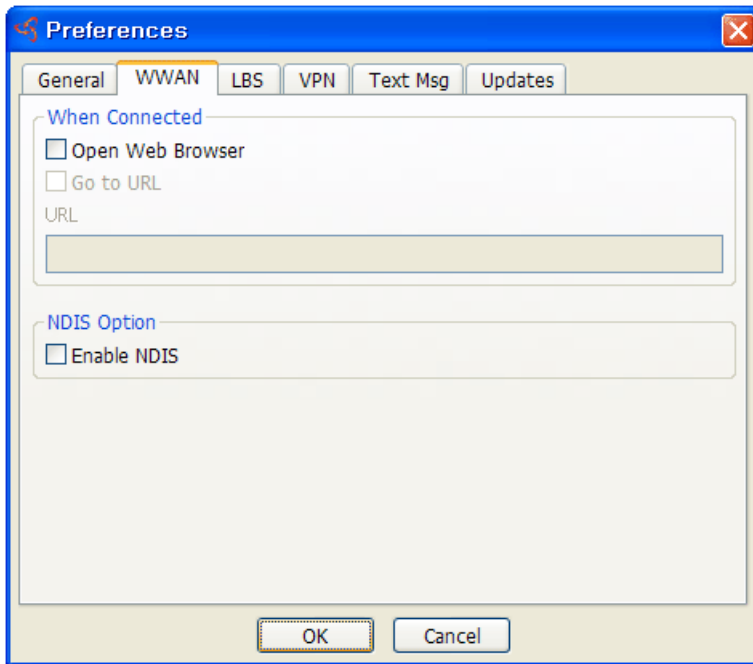


- **Starting Options**
- **Run Connection Manager at Startup:** If this option is checked the Franklin Access Manager starts automatically when Windows starts.
- **Show Splash Window:** Display splash window when Franklin Access Manager starts.

- **Minimize Application into Tray:** When you minimize the application it will now appear in the Windows task bar. To restore the application click on Franklin Access Manager tray icon, and select[Open].

(2) WWAN Specific Settings

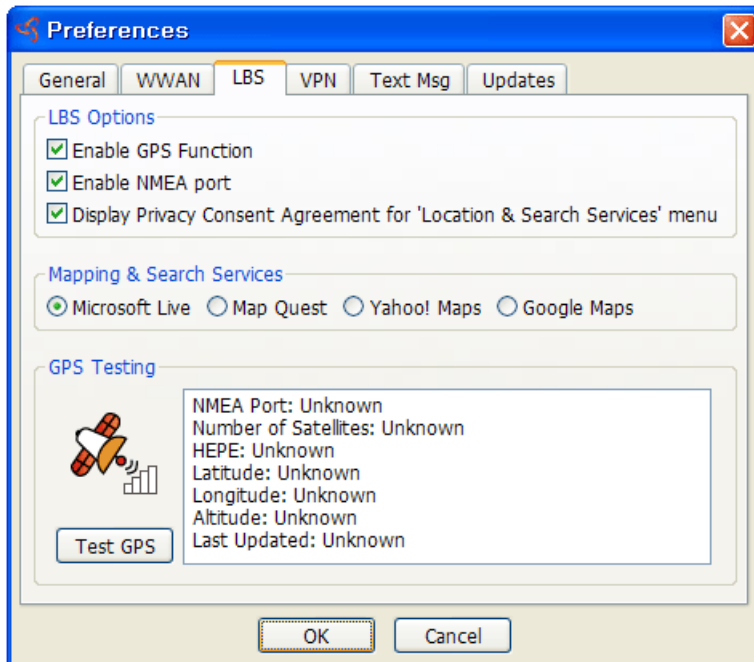
- **When Connected:** This is used to set various WWAN connection settings.



- **Open Web Browser:** If it is checked, y, Franklin Access Manager will launch the default web-browser automatically when the data connection is established successfully.
- **Go to URL:** Use this option to enable web-browser go to web site you defined using URL field below.
- **URL:** Website URL for starting page of web browser started automatically upon connecting to the Franklin Access Manager network.
- **NDIS (Network Driver Interface Specification) Option**
- **Enable NDIS:** When enabled, this feature allows automatic internet connection without user interaction

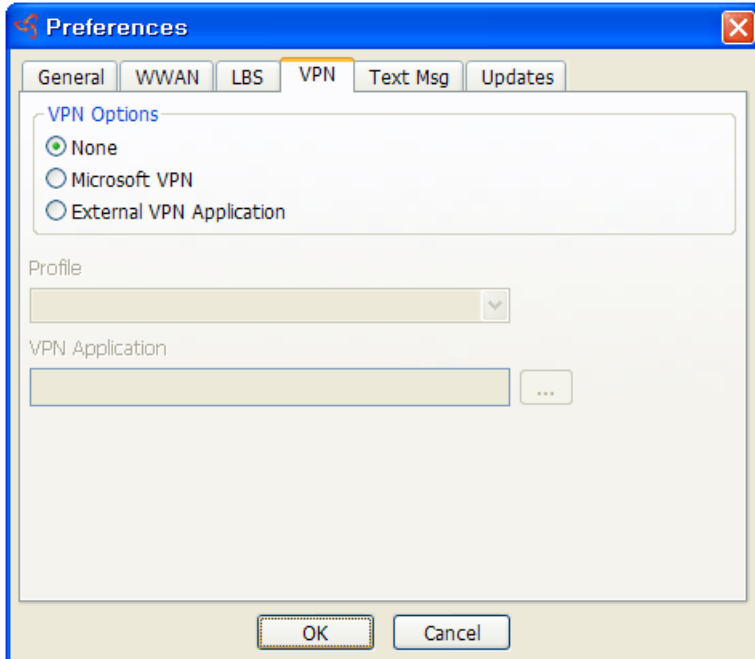
(3) LBS settings

This feature allows Franklin Access Manager software to setup LBS options.



- **LBS Options:** Enable/Disable LBS function and confirmation screen for Privacy Consent Agreement.
- **Mapping & Search Services:** You can choose the map service for result of 'Location & Search Services'.
- **GPS Testing:** You can see current GPS signal level and perform functionality test. If you click the button 'Test GPS', test results will be updated.

(4) VPN Settings



- **VPN Options**

- **None:** Do not use VPN.

- **Microsoft VPN:** Use VPN client of Microsoft Windows.

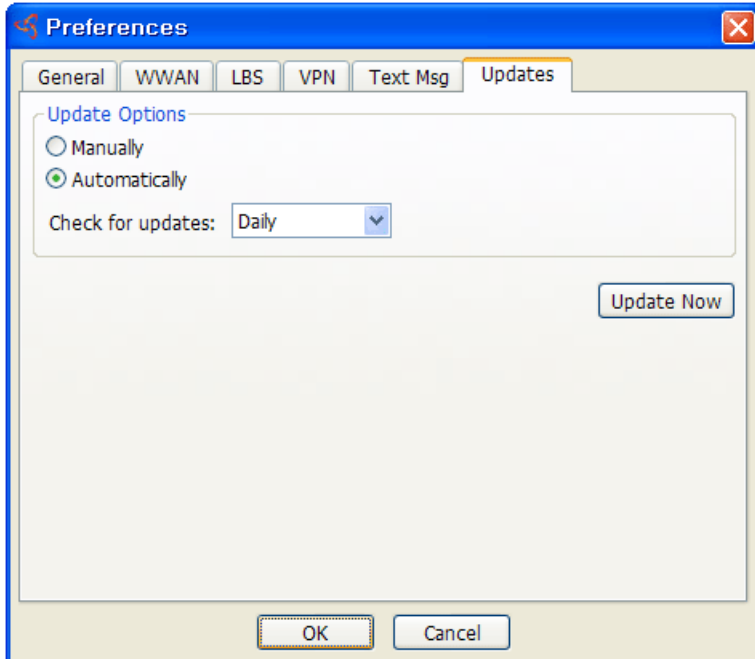
- **External VPN Application:** Use other VPN client application provided another vendor.

Specify other VPN client application. To choose the application from your local disk, click "..." button.

- **Profile (Microsoft VPN only) :** Select Microsoft VPN Profile.

(5) Update Settings

This feature allows Franklin Access Manager software to check for software updates and it can be updated manually or automatically.



- **Update Option**

- **Manually:** If you choose this option, the software will only check for update when you select "Update Now" button or select "Help", then "Check for updates" from main screen.

- **Automatically:** You can allow the software to automatically check for updates, daily, weekly, or monthly. It only checks when the application is running and when it detects that you are connected and able to access the Internet.

[Language]

You can change language setting between English and Spanish.

The Help Menu

- **Contents:** It provides contents for additional information.
- **Check for Updates:** Select this option to check for the available latest software.
- **About:** Displays copyright and U210 device information



Additional Features

In addition to the basic features mentioned in previous sections, Franklin Access Manager has the additional features listed below.

- ***Status Bar***

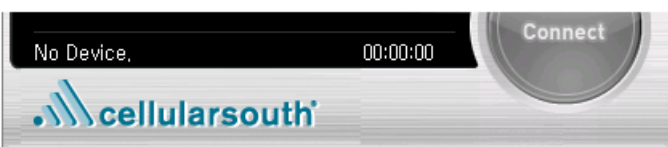
The details of your current connection can be seen in the status bar at the bottom of Franklin Access Manager interface. This status bar is always visible when the interface is fully expanded.



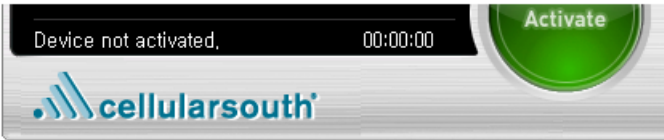
- ***Connection Status***

The text on the status bar reflects your current state. During an active connection, this text will change to "Connected". If you are not connected, it will display "Disconnected".

- ***WWAN USB Modem Status Area***: The text can change to the following:
- ***No Device***: Your WWAN USB Modem is removed from the laptop.

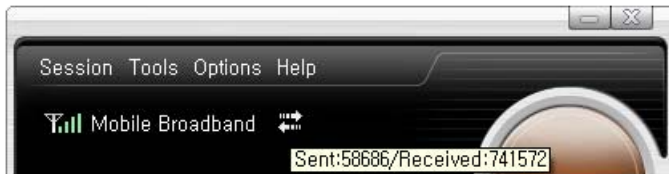


- ***Device not activated***: Your USB Modem needs to be activated. Select "Activation" from the Tools menu.



- **Throughput**

The amount of data that you have sent and received since the current network connection was initiated can be seen by holding the mouse over.



- **Elapsed Time**

The amount of time that has elapsed since the current network connection was initiated is tracked on the lower left side of the status bar.

5. INSTALLING U210

Recommended System Requirements

To successfully install and use the U210 USB device in your PC, the following system specifications are required.

Item	Required Specification
Operating system	Windows® 2000/XP/Vista Mac OS X 10.4/10.5/10.6
USB Port	Type A USB port
Processor/Memory	Minimum required system to support the above OS

Remove the Modem from your Computer

- Remove the U210 from your laptop. When removing the modem, always grip the sides of the modem and pull carefully.

Using the USB Modem Extension USB cable

- The U210 modem package includes an extension USB cable. Although the USB cable is not required for use with your U210 modem, it offers increased performance for your

modem under certain operating conditions. Connect the USB cable to USB ports of your computer.

Troubleshooting

The following is a partial listing of errors and possible solutions. Please refer to the Inline Help and the Franklin Access Manager User Manual for a full listing.

- Ensure that the Franklin Access Manager has been correctly installed on your computer.
- Ensure that your USB modem has been activated.
- Ensure that the USB modem is fully plugged into the USB slot.
- Ensure that the LED light is on; otherwise connect and then reconnect the USB modem.

CARE AND MAINTENANCE

Your device is a product of superior design and craftsmanship and should be treated with care. The suggestions below will help you protect your warranty coverage.

- (a) Keep the device dry. Precipitation, humidity and all types of liquids or moisture can contain minerals that will corrode electronic circuits.
- (b) Do not use or store the device in dusty, dirty areas. Its moving parts and electronic components can be damaged.
- (c) Do not store the device in hot areas. High temperatures can shorten the life of electronic devices, damage batteries, and warp or melt certain plastics.
- (d) Do not store the device in cold areas. When the device returns to its normal temperature, moisture can form inside the device and damage electronic circuit boards.
- (e) Do not attempt to disassemble the device.
- (f) Do not drop, knock, or shake the device. Rough handling can break internal circuit boards and fine mechanics.
- (g) Do not use harsh chemicals, cleaning solvents, or strong detergents to clean the device.
- (h) Do not paint the device. Paint can clog the moving parts and prevent proper operation.
- (i) Use only the supplied or an approved replacement antenna. Unauthorized antennas, modifications, or attachments could damage the device and may violate regulations governing radio devices.

All of the above suggestions apply equally to your device, battery, charger, or any enhancement. If any device is not working properly, take it to the nearest authorized service facility for service.

WARRANTY

Manufacture's Limited One-Year Warranty:

Franklin Wireless (the company) warrants to the original retail purchaser of this device, that should product or any part thereof, during normal consumer usage conditions, be defective in material or workmanship that results in product failure within the first twelve (12) month period from the date of purchase, such defects will be repaired or replaced (with new or refurbished) product at the Company's discretion, without charge for parts and labor directly related to the defect(s). This warranty extends to consumers who purchase the product in the United States or Canada and it's not transferable or assignable. This warranty does not apply to:

- (a) Product subject to abnormal use or conditions, accident, mishandling, neglect, unauthorized alteration, misuse, improper installation or repair or improper storage;
- (b) Products whose mechanical serial number or electronic serial number has been removed, altered, or defaced;
- (c) Damage from exposure to moisture, humidity, excessive temperature or extreme environment conditions;
- (d) Damage resulting from connection to, or use of any accessory or other product not approved or authorized by the company;
- (e) Defects in appearance, cosmetic, decorative or structural items such as framing and non-operative parts;
- (f) Product damaged from external causes such as fire, flooding, dirt, sand, weather conditions, battery leakage, blown fuse, theft or improper usage of any electrical source.

The Company disclaims liability for removal or reinstallation of the product, for geographic coverage, for inadequate signal reception by the antenna or for communications range or operation of the cellular system as a whole.

When sending your wireless device to Franklin Wireless' authorized distributions for repair or service, please note that any personal data or software stored on the device may be inadvertently erased or altered. Therefore, we strongly recommend you make a back up copy of all data and software contained on your device before submitting it for repair or service. This includes all contact lists, downloads (i.e. third-party software applications, games and graphics) and any other data added to your device. Franklin Wireless is not responsible for and does not guarantee restoration of any third-party software, personal information or memory data contained in, stored on, or integrated with any wireless device, whether under warranty or not, returned to Franklin Wireless' authorized distributors for repair or service. To obtain repairs or replacement within the terms of this Warranty, the product should be delivered with proof of Warranty coverage (e.g. dated bill of sale), the consumer's return address, daytime phone number and/or fax number and complete description of the problem, transportation prepaid, to the Company at the address shown below or to the place of purchase for repair or replacement processing. In addition, for reference to an authorized Warranty

station in your area, please call (800)959-3558 in the United States.

The extent of the company's liability under this warranty is limited to the repair or replacement provided above and, in no event, shall the company's liability exceed the purchase price paid by purchaser for the product.

Any implied warranties, including any implied warranty of merchant ability or fitness for a particular purpose, shall be limited to the duration of this written warranty. Any action for breach of any warranty must be brought within a period of 18 months from date of original purchase, but in no case shall the company be liable for a special consequential or incidental damages for breach of this or any other warranty, express or implied, whatsoever. The company shall not be liable for the delay in pending service under this warranty or loss of use during the time the produce is being repaired or replaced.

No person or representative is authorized to assume for the Company any liability other than expressed herein in connection with the sale of this product.

Some states or provinces do not allow limitations on how long an implied warranty lasts on the exclusion or limitation of incidental or consequential damage so the above limitation or exclusions may not apply to you. This Warranty gives you specific legal rights, and you may also have other rights, which vary from state to state or province to province.

Franklin's Authorized Service Center Address:
5440 Morehouse Dr. STE 1000
San Diego, CA 92121

SAR INFORMATION

THIS MODEL PHONE MEETS THE GOVERNMENT'S REQUIREMENTS FOR EXPOSURE TO RADIO WAVES.

Your wireless phone is a radio transmitter and receiver. It is designed and manufactured not to exceed the emission limits for exposure to radiofrequency (RF) energy set by the Federal Communications Commission of the U.S. Government. These limits are part of comprehensive guidelines and establish permitted levels of RF energy for the general population. The guidelines are based on standards that were developed by independent scientific organizations through periodic and thorough evaluation of scientific studies. The standards include a substantial safety margin designed to assure the safety of all persons, regardless of age and health. The exposure standard for wireless mobile phones employs a unit of measurement known as the Specific Absorption Rate, or SAR. The SAR limit set by the FCC is 1.6 W/kg. * Tests for SAR are conducted with the phone transmitting at its highest certified power level in all tested frequency bands. Although the SAR is determined at the highest certified power level,

the actual SAR level of the phone while operating can be well below the maximum value. This is because the phone is designed to operate at multiple power levels so as to use only the power required to reach the network. In general, the closer you are to a wireless base station antenna, the lower the power output. Before a phone model is available for sale to the public, it must be tested and certified to the FCC that it does not exceed the limit established by the government adopted requirement for safe exposure. The tests are performed in positions and locations (e.g., at the ear and worn on the body) as required by the FCC for each model. The highest SAR value for this model modem when tested for use near the body, as described in this user guide, is 1.18 W/Kg. While there may be differences between the SAR levels of various phones and at various positions, they all meet the government requirement for safe exposure. The FCC has granted an Equipment Authorization for this model phone with all reported SAR levels evaluated as in compliance with the FCC RF exposure guidelines. SAR information on this model phone is on file with the FCC and can be found under the Display Grant section of <http://www.fcc.gov/oet/fccid> after searching on FCC ID: XE5-U210. Additional information on Specific Absorption Rates (SAR) can be found on the Cellular Telecommunications Industry Association (CTIA) web-site at <http://www.wow-com.com>.

- In the United States and Canada, the SAR limit for mobile phones used by the public is 1.6 watts/kg (W/kg) averaged over one gram of tissue. The standard incorporates a substantial margin of safety to give additional protection for the public and to account for any variations in measurements.

SAFETY INFORMATION

SAFETY INFORMATION FOR FIXED WIRELESS TERMINALS POTENTIALLY EXPLOSIVE ATMOSPHERES

Turn your phone OFF when in any area with a potentially explosive atmosphere and obey

all signs and instructions. Sparks in such areas could cause an explosion or fire resulting in bodily injury or even death. **INTERFERENCE TO MEDICAL DEVICES** Certain electronic equipment may be shielded against RF signal from your wireless phone.

(pacemakers, Hearing Aids, and so on) Turn your phone OFF in health care facilities when any regulations posted in these areas instruct you to do so. RF signals may affect improperly installed or inadequately shielded electronic system in motor vehicles.

EXPOSURE TO RF ENERGY Use only the supplied or an approved replacement antenna. Do not touch the antenna unnecessarily when the phone is in use. Do not move the antenna close to, or touching any exposed part of the body when making a call. **NEAR BODY OPERATION** This device was tested for typical near body operations with the back of the phone kept 0.5 cm from the body. To maintain compliance with FCC RF exposure requirements, it must have a minimum distance including the antenna of 0.5 cm from the body during normal operation

U.S.A.

U.S.FEDERAL COMMUNICATIONS COMMISSION RADIO FREQUENCY INTERFERENCE STATEMENT

INFORMATION TO THE USER NOTE: This equipment has been tested and found to comply with the limits for a Class B digital device pursuant to Part 15 of the FCC Rules. These limits are designed to provide reasonable protection against harmful Interference in a residential installation. This equipment generates, uses, and can radiate radio frequency energy and, if Not installed and used in accordance with the instructions, may cause harmful Interference to radio communications. However, there is no guarantee that interference will not occur in a particular Installation. If this equipment does cause harmful interference to radio or television reception, which can be determined by turning the equipment off and on, the user is encouraged to try to correct the interference by one or more of the following measures:

- Reorient or relocate the receiving antenna. Increase the separation between the equipment and receiver.
- Connect the equipment into an outlet of a circuit different from that to which the receiver is connected.
- Consult the dealer or an experienced radio/TV technician for assistance.

Changes or modification not expressly approved by the party responsible for Compliance could void the user's authority to operate the equipment. Connecting of peripherals requires the use of grounded shielded signal cables.